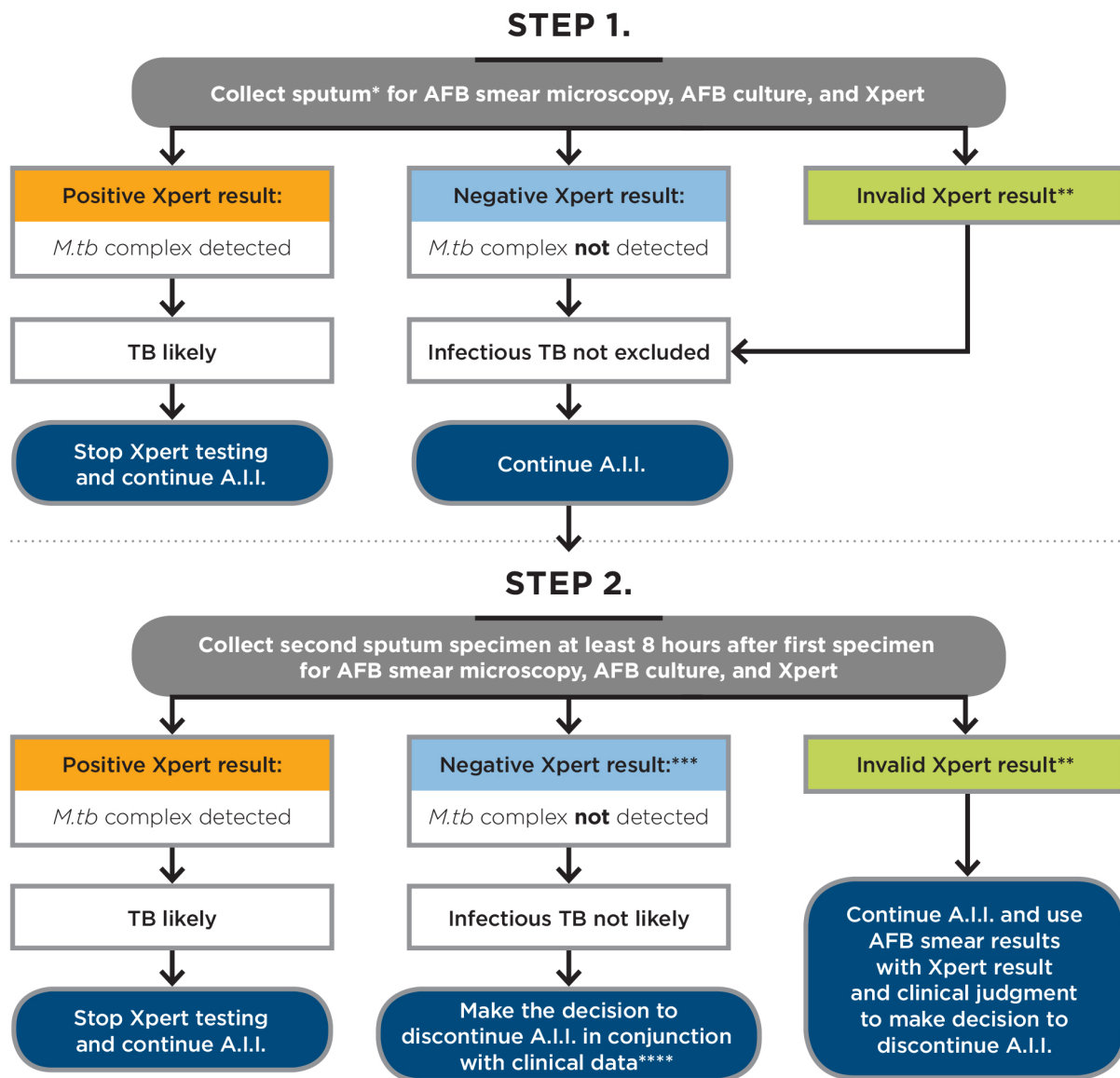


Use of GeneXpert in Discontinuing Airborne Infection Isolation



M. tb: *Mycobacterium tuberculosis* **A.I.I.:** Airborne infection isolation

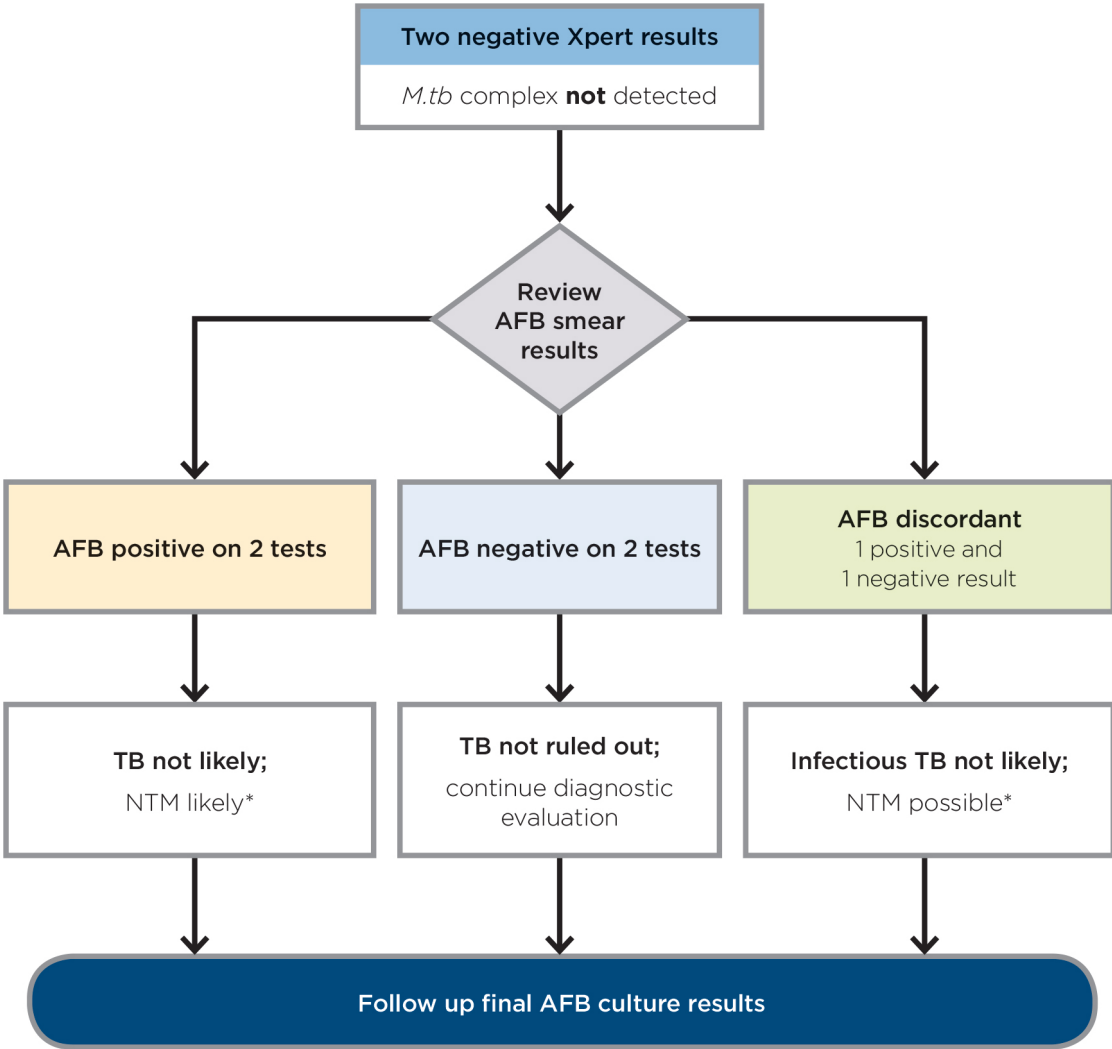
*First morning specimen preferred to maximize diagnostic yield of AFB sputum smear, culture, and Xpert.

** Most laboratories/protocols will automatically retest leftover sample if an initial invalid (failed) result is obtained; in such cases, a reported invalid result reflects repeat testing of a single specimen.

*** If this result is Negative following an initial invalid result in Step 1 and infectious TB still is clinically suspected, a repeat test (repeat Step 2) using a new specimen, if available, is recommended in order to improve sensitivity. Alternatively, the clinician may use the single Negative Xpert result from Step 2 with smear results and clinical information to make the decision to discontinue or maintain A.I.I.

**** **Note:** This process does not rule out tuberculosis with 100% certainty. Refer to Appendix IIIb *Application of AFB Smear Microscopy to Negative Xpert Results* to assist in diagnostic evaluation.

Application of AFB Sputum Smear Microscopy to Negative Xpert Results



NTM: nontuberculous mycobacteria